

Flossmoor School District 161

# Parker Junior High



2011-2012

## Band Handbook

Ms. Elana Panner

Mrs. Heather Hoefle

Directors

# Did you know?

**1. Students with band and orchestra experience attend college at a rate twice the national average.**

- *Bands Across the USA.*

**2. Music students out-perform non-music students on achievement tests in reading and math. Skills such as reading, anticipating, memory, listening, forecasting, recall, and concentration are developed in musical performance, and these skills are valuable to students in math, reading, and science.**

- *B. Friedman, "An Evaluation of the Achievement in Reading and Arithmetic of Pupils in Elementary School Instrumental Music Classes," Dissertation Abstracts International.*

**3. One in three of today's school-aged children will hold an arts-related job at sometime in his or her career.**

- *Education Commission on the States.*

**4. The College Board, in a publication about college admissions, states, "preparation in the arts will be valuable to college entrants whatever their intended field of study."**

- *Academic Preparation for College: What Students Need To Know and Be Able To Do, The College Board.*

**Congratulations on signing your  
child up for band!**

**It is a valuable opportunity!**

## ***Contact Information***

Ms. Elana Panner: 647-5476

Mrs. Heather Hoefle: 647-5474

## ***Band Rehearsal Schedule***

Symphonic Band- Monday, Wednesday, Friday- 7:50-8:40 a.m.

Concert Band – Tuesday, Thursday- 7:50-8:40 a.m.

**\* Both Symphonic and Concert Band Students need to be dropped off at 7:40 a.m.**

Beginning Band - Monday- 3:30-4:30 p.m.

Blue Jazz Band – Tuesday-3:30-4:30 p.m. (if enrollment is sufficient)

Gold Jazz Band – Thursday-3:30-4:30 p.m.,

additional sectionals on some Tuesdays from 3:30 – 4:30 p.m.

**All rehearsals are in the L.G.I. room at Parker Junior High**

## ***Grading***

Grading will be based upon the following:

- Full Band Rehearsal Attendance (2 points per rehearsal)
- Group Lesson Attendance (2 points per lesson)
- Practice Journals (2 points per week)
- Performances (5-10 points each)
- Quizzes and tests (vary)
- Students taking instruments and music home over the weekend (5 points per week)

**Grades can be accessed online, you can keep track of your child's participation and progress from home.**

### ***\*\*\* Participation \*\*\****

The Band is a team. In order to present the students with the best musical education possible, each member needs to be in attendance and arrive on time. Students who do not attend lessons and rehearsals regularly, or who are habitually late, may be dismissed at the director's discretion.

***Students who practice are successful.  
Students who are successful enjoy band!***

## *Group Lessons (in school)*

**In addition to attending rehearsals, students are required to attend a half hour lesson on their respective instrument every week.** Each student will be issued a consistent time that will prevent a student from missing the same class (as the school day rotates). Students who are taking a test or are involved in a lab are encouraged to reschedule a lesson during a different time. Students who miss a lesson should meet with their director to schedule a make-up.

Missing one-half or more of the lessons required in a quarter may result in a final quarter grade lowered by one letter.

## *Practice Journals*

It is expected that each student practice at home so their part is prepared for lessons and class. To help aid in the practice routine, each student is required to keep a practice journal. Students should practice their lesson assignments in a well-lit area with a music stand. Students should document their practice minutes each day and have their parents sign the practice journal before turning it in to their director each week. The practice record is due at the first rehearsal of the week. Grades for the practice record are as follows:

90 minutes and above-A  
70-89 minutes-B  
50-69 minutes-C  
30-49 minutes-D  
29 and under-U

To ensure success, plan a set time to practice which is consistent throughout the week; this will help foster good habits. Also, check the practice journal to see that the assigned material is being practiced.

Up to one point **extra credit** can be earned per week for an extra 30 minutes of practice, resulting in 120 minutes practiced that week. However, this extra credit is not meant to make up for missed lessons.

## *Band Uniform*

All band members must own a Parker Junior High Music Department polo shirt. These shirts are also used by the choir and orchestra programs. Along with the polo shirts, students must wear black dress pants (please no grey, pinstripes, or navy blue, no gauchos or capris), black socks, and plain, solid black dress shoes. This will be the uniform for Marching Band as well. A student who is not properly dressed in uniform will not be permitted to participate in performances and will lose points towards his/her participation grade.

## *Jazz Band*

Jazz band is a unique opportunity for students to be exposed to different genres of music. Students will perform big band charts and standard jazz arrangements with an emphasis on improvisation. The Gold Jazz Band will meet every Tuesday from 3:30-5:00 p.m. and Blue Jazz Band will meet every Wednesday from 3:30-4:45 p.m., both in the L.G.I. All students participating in jazz band are given extra-credit toward their report card grade.

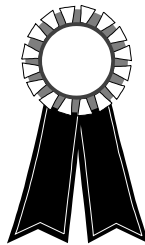
## *Marching Band*

During the weeks between the Spring Concert and Memorial Day, both Concert Band and Symphonic Band students begin preparing for the Memorial Day Parade in downtown Homewood. Rehearsals will be everyday before school, instead of the regular band schedule. **All students are required to participate in rehearsals regardless of whether or not they will participate in the parade itself.**



## *Solo and Ensemble Festival*

All Concert and Symphonic Band students participate in our solo and ensemble festival. The event takes place on a Saturday in February, and is a unique opportunity for students to perform in a solo or small group, and to gain insight from working professionals. Students who are unable to participate on the Saturday will be expected to perform their event for both Parker band instructors.



## *Private Lessons (outside of school)*

One-to-one instruction is encouraged to ensure our students success as an instrumentalist. Professional private teachers of the highest caliber are available to teach our students on an individual basis at local music stores such as the Melody Mart (798-5500) and the Van Moody School of Music (647-6002). A list of additional private lesson instructors can be obtained from Ms. Panner or Mrs. Hoefle.

## *Equipment*

In addition to the provided band binder, and the parent purchased uniform Parker Junior High polo shirt, black pants, socks and shoes, your child will need the appropriate accessories for their instrument.

**Flute** – handkerchief (for swab) and cleaning rod. Silk swabs are for sale at Quinlan and Fabish, but a plain men’s handkerchief will work just as well.

**Oboe** – small water-tight container for water (film cases work well), at least three reeds of appropriate strength, swab

**Clarinet, alto saxophone** – cork grease, reed guard (plastic device for holding reeds, not the same as the ones the reeds come in), several reeds of the appropriate strength (depends on the student’s development), and handkerchief swab

**Tenor Saxophone** – cork grease, reed guard (plastic device for holding reeds, not the same as the ones the reeds come in), several reeds of the appropriate strength (depends on the student’s development), clarinet hankie swab (for neck of saxophone) and tenor sax hankie swab.

**Horn** – rotary valve oil, tuning slide grease

**Trumpet, trombone, baritone, tuba** – valve oil, tuning slide grease

**Percussion** –

Listed below are the types of mallets required, with some suggestions for models that can be purchased at Melody Mart in Homewood at the prices listed below. Once purchased, make sure that student names are placed on sticks, mallets, and the stick bag.

	<u>Model</u>	<u>Price</u>
<b>Concert Drumsticks</b>	Vic Firth SD1	ca. \$11.99
<b>Plastic Mallets</b>	Mike Balter Model 91 (Medium Hard, 1 1/8” Poly Ball) with Birch Handles	ca. \$19.95
<b>Yarn Mallets</b>	Musser M-407 (Semi-Hard, Blue Yarn, Birch Handles)	ca. \$41.99
<b>Timpani Mallets</b>	Vic Firth T1 General Timpani Mallets	ca. \$36.95
<b>Stick Bag</b>	Zildjian Black Cordura Z13255	ca. \$16.99

We realize that many students already own equipment that falls into the above categories. If this is the case, please see one of the directors to determine that the mallets are suitable.

**Band members need to keep the method book that they last used in band lessons.**



# WHAT TO PRACTICE

1. Scales
2. Book work from check-off list in binder
3. band music

# HOW TO PRACTICE

USE A MUSIC STAND in a well-lit area. Stand up or sit up in an armless, sturdy chair.

WARM UP on the mouthpiece, then on the whole instrument with long tones and scales. Warm up the whole range of your instrument and your articulation (tonguing), too. Percussionists warm up on rudiments.

IDENTIFY the sections of music you CANNOT play well yet.

REPEAT these sections AS SLOWLY AS YOU NEED TO IN ORDER TO PLAY THEM CORRECTLY until you can play them 5 times without a mistake. Then gradually speed up.

If you are ready, try a larger section of the piece and see if you make it through the difficult sections.

End your session by PLAYING SOMETHING YOU LOVE. Playing what you already know is PLAYING, not practicing, but we all need to play now and then.

PRACTICE FIRST, PLAY LATER!

PRACTICE,  
PRACTICE,  
PRACTICE,  
PLAY!

# SmartMusic

SmartMusic is an exciting computer program that our school is using. Parents and students can choose to subscribe to it in their homes as well.

On the next page is a broad overview of what the program can do. Generally, it is a program that accompanies your child's practice at home, to make practice more fun and productive.

SmartMusic can be used for practicing band music, method books, scales, jazz improvisation and more.

More information can be found at [SmartMusic.com](http://SmartMusic.com)



## SmartMusic is Music Learning Software

Never practice alone. Get better faster. Make practicing fun.

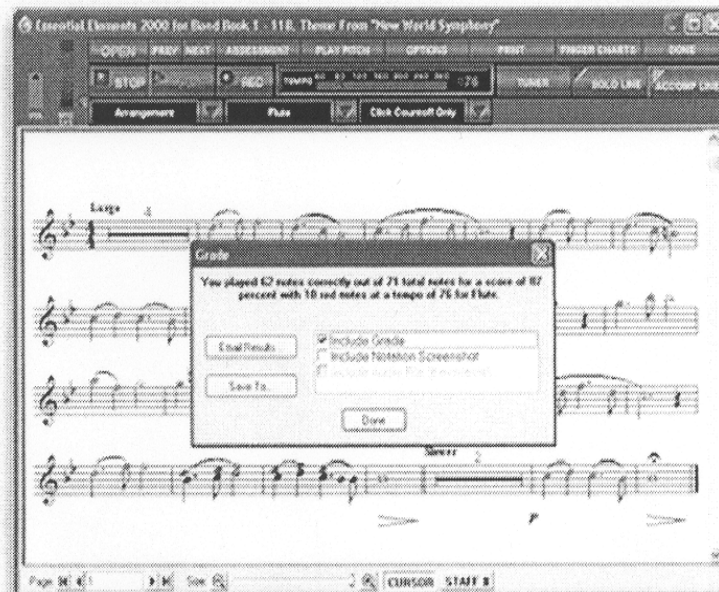


Fire up SmartMusic on your computer. Plug in a vocal or instrumental microphone and begin practicing. Students play or sing their part with accompaniment and receive, in real time on the computer, detailed feedback on their performance. Ideal for woodwind, brass, string, and vocal musicians of all levels.

As a student using SmartMusic:

- Your teacher can [send assignments](#) to you online.
- You practice exercises and songs from a huge [library of music titles](#).
- You play along with [Intelligent Accompaniment®](#), so you hear your part as it should be with the rest of your musical group.
- SmartMusic listens as you play, giving constant [feedback](#) on how well you play.
- Instant help with [fingering instructions](#) helps you learn faster.
- Move at your own pace. You control the [tempo](#), [key](#), [practice loops](#), and more.
- You can make a [recording](#) of your practice to send back to your teacher for grading.

[VIEW LARGER](#)



**Assessment - SmartMusic listens as you play and gives you instant feedback.**

# HOW TO HELP YOUR CHILD SUCCEED IN BAND

1. Subscribe to SmartMusic at home.
2. Get them to rehearsals and performances on time, with all of the proper equipment and music.
3. Make sure they have all the accessories they need (music stand, reeds, valve oil, swabs, etc.).
4. Listen for practicing at home, and look to see what your child is working on. Ask for performances. Listen for progress, not perfection.
5. Sign practice journals weekly.
6. Check to make sure your child brings their instrument home on weekends (at least!) for practice.
7. Check their band grade online. Check to see that they are attending lessons and getting to rehearsals on time.
8. Be sure your child has the proper uniform.
9. Consider private lessons outside of school.
10. Make sure you are familiar with the information in this handbook.

Please fill out the Band Commitment Contract  
on the following page and turn it in  
no later than Friday, September 16<sup>th</sup>.

# Band Commitment Contract

Any changes to the information included in the band handbook will be announced as soon as we are aware of them. **After reading the handbook thoroughly, please fill out the form below and return it to us no later than Friday, September 16<sup>th</sup>, 2011. Students who do not have a contract in by that date will not be permitted to participate in rehearsals until the contract is received.**

---

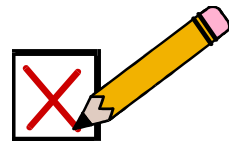
**I have read the Band Handbook for the 2011-2012 school year and I understand all that I am responsible for.** Failure to participate in these events, as well as all rehearsals and group lessons without proper notice, may result in consequences such as a lower grade or dismissal from the program.

Part of being a team includes being prepared for rehearsals, performances, and knowing the band schedule in advance.

Student's signature (required!) \_\_\_\_\_ Date \_\_\_\_\_

Parent's signature \_\_\_\_\_ Date \_\_\_\_\_

Parent's email address: \_\_\_\_\_



I am interested in volunteering to help in the following ways:

\_\_\_\_ chaperoning field trips \_\_\_\_ donating purchased food \_\_\_\_ helping with events

**Thank you!!**

# Music Department Shirt Order Form

For Varsity and Falcon Orchestras, Beginning Band,  
and all Parker Bands and Choirs



All members of our musical groups are required to own a royal blue Music Department polo shirt. Sample shirts are available at Parker to help determine sizes. If you intend to use a shirt from last year, please make sure it is large enough to fit throughout the school year. Shirts ordered later in the year will be charged an additional silk screening fee.

*In addition to the polo shirt, every music department participant will need to have **black dress pants (please no navy or grey), black socks, and black dress shoes.***

Please fill out the form below and return it to us **no later than September 30<sup>th</sup>**.  
**Payment must be turned in with the shirt order.**

-----  
**Student's Name:** \_\_\_\_\_ **Grade Level** \_\_\_\_\_

**Musical Group** \_\_\_\_\_ **Director** \_\_\_\_\_

**Shirt Size:** All sizes except XXL are \$10.00

Circle one chL (14-16) chXL S M L XL XXL (\$11.00)  
(child's sizes run small)

**Please make checks payable to Flossmoor District #161. Payment must be turned in with the shirt order. PLEASE WRITE YOUR CHILD'S NAME ON THE CHECK.**